

Welcome to the Spring/Summer 2011 Issue

Spring is in the air and it's time for another edition of the newsletter! Inside you can read all about the latest projects we've been working on, plus you'll find details of our latest contract wins and news of various other developments...

Chairman's Review of 2010

Managing Director Tony Pond reflects on 2010 and looks ahead to the future...

We may already be in the second quarter of 2011, but 2010 remains a great memory for First Choice Build Group.

It proved to be a busy year. The company completed fit outs across the UK for a range of repeat business clients including Prudential, Regus, NAG, Clydesdale Bank and T-Mobile.

2010 also brought many firsts for the company. We won our first ever residential project (Whitelands House, Chelsea) and progressed into the hospital refurbishment sector by winning the contract to refurbish Milford Hospital for NHS Surrey.

Last year was also notable for our work on the B.Hive, a highly unique project which brought to life the concept created

by Regus and Lynne Franks. We also continued our excellent relationships with clients such as Prudential, which brought work at Waterhouse Square and Chelmsford, and National Australia Bank, amongst others.

First Choice also recently passed the latest ISO 9001 and 14001 assessments, which means we continue to hold these important certifications which demonstrate to our clients our commitment to improved quality and environmental management systems.

So what's ahead for 2011? We have already completed the first of four stages at Milford hospital and we have recently won several exciting projects which bring us on target for this year.

You can read more about our work elsewhere in the issue.



An Insight Into Part L Building Regulations, Now and the Future



The Gherkin will play host to a seminar on 7th April being held by First Choice Build Group in conjunction with property consultants HurleyPalmerFlatt.

Stuart Bowman of HurleyPalmerFlatt will be giving a seminar on Part L Building Regulations called "An Insight into Part L, Now and the Future."

It is the latest in a series of seminars being held by First Choice. The previous

event covered Capital Allowances and was held in conjunction with Davis Langdon.

The seminar at the iconic 33 St Mary Axe building start at 8am and includes breakfast.

**Thursday 7th April 2011 @ 8am
33 St Mary Axe, London**

**RSVP 31st March 2011
John.blythe@firstchoiceltd.co.uk
M: 07798 695 942**

Latest Project Completed for M&G in Chelmsford

First Choice Build Group has completed a £570k project for M&G/Prudential in Chelmsford.

The 6 week refurbishment and fit out of the company's offices at 1 Legg Street, a modern purpose built office building near Chelmsford town centre, has created a high quality office environment which incorporates an open plan office with separate meeting and interview rooms and a fully fitted kitchen area with tea points.

HamburyHird Design were the architects, Warwick Avenue the Cost Consultants, TMD the Project Managers and KJ Tait the Engineers.

A spokesman for Prudential said:

"A big thank you to Andy, Pete and the team for your efforts in getting the new Fairbairn Business Centre constructed. I left site yesterday, the office suite was looking great, the occupants were busy with their work and our senior client was happy. Well done."



First Stage of Milford Hospital Project Finished

First Choice Build Group has completed the first stage of a four ward refurbishment at Milford Hospital in Surrey, which is being undertaken for NHS Surrey (Surrey PCT).

Work completed so far includes new DDA compliant bathrooms and washrooms incorporating specialist 'hi-low' baths and lifting equipment, a dedicated treatment room and nurse reception area. The project incorporates technology such as a dedicated nurse call wi-fi system which is compliant to current HTM guidelines, automatic and assisted doors and dedicated services incorporating bedhead trunking.

Other wards in the hospital were in occupation by patients whilst the works were taking place.

John Blythe, Business Manager, said:

"We were delighted to win this project and I'm pleased to announce that the first stage has been completed successfully."

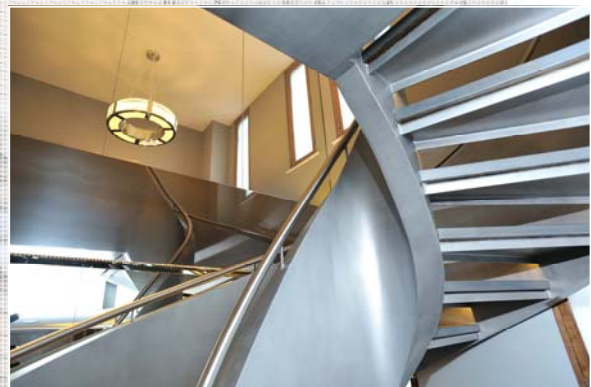


Residential Refurbishment in Chelsea Completed

First Choice Build Group have completed this prestigious residential project at Whitelands House, Chelsea.

The client already owned a property in this Mansion block and having purchased a second flat required the conversion of them into one luxury duplex apartment with the installation of an internal through floor staircase.

The works comprised of a complete strip out, refurbishment and fit out of the properties and was completed to a very high luxury custom specification including a bespoke staircase, walnut veneer panelling and kitchen units, leather finished drinks bar and a specialist lighting and entertainment console.



Latest Project Wins

Fit Out and Refurbishment project for Prudential in Paddington.

Office Restack for Prudential in Arthur Street, to be undertaken in the evenings and weekends.

Office Restack project for M&G at Governors House, London, to be undertaken in the evenings and weekends.

Follow us on Twitter!

Did you know that First Choice Build Group is on Twitter? Simply visit www.twitter.com/fcbuildgroup and follow @fcbuildgroup to see all our latest Tweets. Twitter's an addictive but very useful thing - so join in the fun by following us today!



@fcbuildgroup
twitter.com/fcbuildgroup

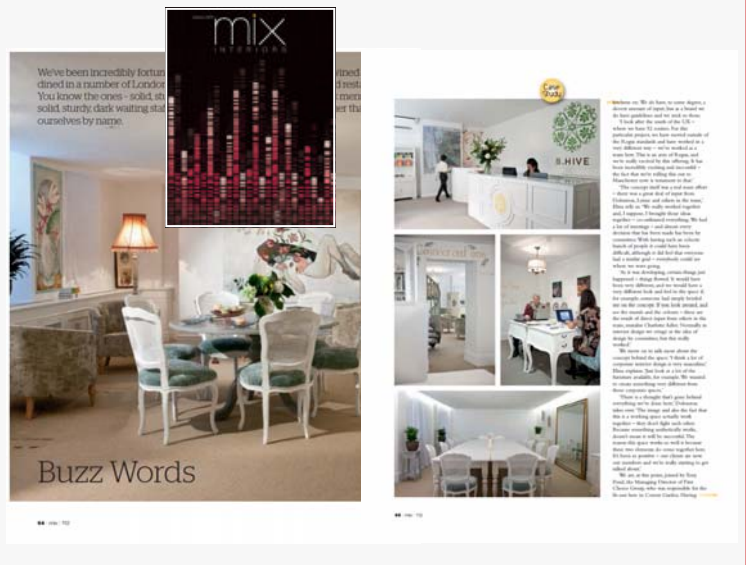
Get in touch...

First Choice Build Group
4-6 Murray Business Centre
Murray Road
Orpington
Kent
BR5 3RE
> 01689 828182
> www.fcbuildgroup.co.uk

Catch The B.Hive In The March 2011 Issue of Mix Interiors

Mix Interiors, the magazine for office interiors and corporate spaces, has run a case study feature on the B.Hive Women's Business Club, the project recently completed by First Choice Build Group for Regus.

Visit www.mixinteriors.com to download the feature case study and find out more about the magazine.



First Choice Welcomes Four New Members To The Team

We are pleased to announce that we have recently taken on some new staff:

John Etherington joins First Choice Build Group as Project Surveyor, Jamie Day as Contracts Manager and Paul Doherty and Tony Bolt as Site Managers.

Ian Cannings, Divisional Director, commented:

"We place people at the heart of our company and I'm delighted to welcome them all to the team.

Each brings a wealth of experience to the company and they will play a crucial role in the future of the business."

