

XEROX®

CopyCentre®
C118

WorkCentre®
M118/M118i

Technology | Document Management | Consulting Services

copy | print | fax | email

Versatility and performance...
**all day,
every day**



First Choice Document Solutions
Tel: 01689 828182
Email: sales@fcdocumentalsolutions.co.uk

CopyCentre C118

WorkCentre M118/M118i

Convenience without compromise

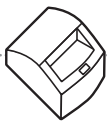
When it comes to meeting your business needs, Xerox has it covered – from a fully-featured, A3-size copier all the way up to a high-performance multifunction system that can copy, print, fax and scan-to-email. These office professionals get all your jobs done right, every time. They're adaptable, convenient, reliable – and always ready for business.

Technologically advanced

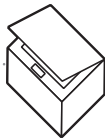
With cutting-edge, high-performance features, the Xerox CopyCentre C118 copier and WorkCentre M118/M118i multifunction system keep productivity in high gear.

- Outstanding image quality for crisp, impressive copies and prints – thanks to our patented EA toner.
- State-of-the-art SMart Kits keep downtime to a minimum. They signal the device to tell you ahead of time when you'll need to replace a toner or drum cartridge. This way you can have all the supplies you need on hand and ready.
- Industry-leading device management allows administrators to configure network settings, control users' access, manage print job queues and track the status of consumables from a remote location (networked models).
- Lightning fast scans – up to 44 images per minute (in 200 dpi mode) – get the job done ahead of schedule.
- ScanSoft OmniPage® and PaperPort® software (WorkCentre M118/M118i option) make it simple to turn paper into editable digital files. Storing, organising and distributing documents is easier than ever.





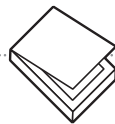
Print



Copy



Fax



Scan-to-email

Easy to use

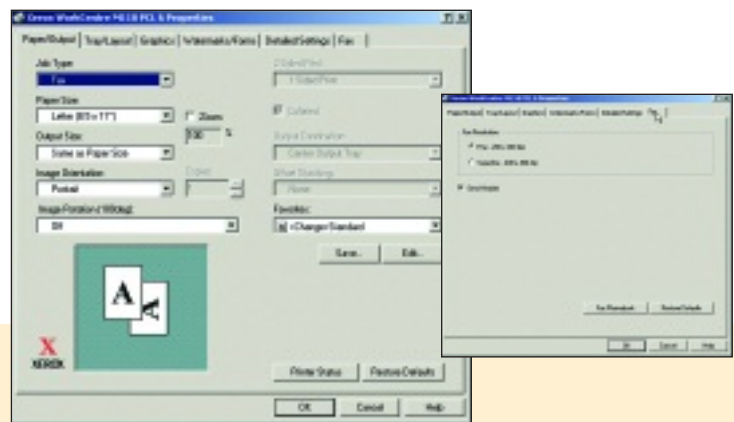
These Xerox devices are built to simplify your everyday tasks.

- Enjoy a simple scan-to-email solution to increase productivity by sending documents directly to your desktop (WorkCentre M118/M118i option).
- Save time with one-touch speed dials and group dials for fast fax connections (fax-enabled devices).
- Fits in anywhere. Its small footprint makes it the perfect multifunction system for space-conscious offices.
- Integrated installation tools and auto IP setup make it easy to get it up and running.

All-around flexibility

Whatever your needs, Xerox devices seamlessly adapt to any office role.

- Reliably feeds a wide range of media. From A3-size paper to transparencies and heavy-duty card stock (up to 216 gsm).
- Expandable paper capacity means busy workgroups can add trays as workloads increase.
- There are so many options to choose from. Configure as an independent copier (CopyCentre C118), a robust copier-printer (WorkCentre M118), or a comprehensive printing, copying and faxing system (WorkCentre M118i) with optional scan-to-email.

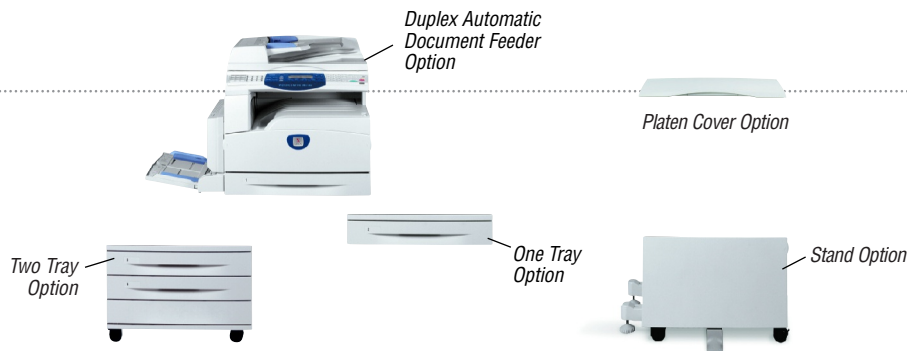


Choose from a desktop or console configuration for more convenience.

Fax with ease from your desktop

With the fax-enabled WorkCentre M118/M118i multifunction system you can send faxes without even leaving your desk. Faxing a document from your PC is as easy as printing it.

You can also take advantage of 2-up faxing. That means you can fax two pages on one – a real cost saver.



CONFIGURATIONS	CopyCentre® C118	WorkCentre® M118	WorkCentre® M118i
Speed		18 ppm	
Duty Cycle (pages/mo)		Up to 50,000	
Paper Handling		250-sheet Tray, 100-sheet Bypass Tray (Total 350 sheets)	
Paper trays		250-sheet Tray, 100-sheet Bypass Tray (Total 350 sheets)	
Standard		250-sheet Tray, 100-sheet Bypass Tray (Total 350 sheets)	
Optional		One Tray Option: 500-sheet Tray (Total 850 sheets) Two Tray Option (with mandatory One Tray Option): Three 500-sheet Trays (Total 1,850 sheets)	
Paper output		250 sheets, Optional automatic two-sided	
Copy		7.4 seconds	
First page out time		600 x 600 dpi	
Resolution		<15 seconds	
Print		600 x 600 dpi	
First page out time	NA	Power PC 300 MHz	
Resolution	NA	USB 2.0, 10/100 BaseTX Ethernet, Parallel (IEEE 1284)	
Processor	NA	PCL6, PCL5e, optional Adobe® PostScript® 3™	
Connectivity	NA	33.6 Kbps*	
PDL Support	NA	33.6 Kbps	
Fax		33.6 Kbps	
Speed		JBIG, MH, MR, MMR*	
Compression		600 dpi*	
Resolution		200 dpi, 400 dpi, 600 dpi	
Scan-to-email*		NA	
Resolution	NA		

*Optional

Copying

Speed: 18 copies per min. (A4)
 Resolution: 600 x 600 dpi
 First Copy Out: 7.4 seconds
 Full Duplex Option: Yes (1-2, 2-2, 2-1)
 Reduce/Enlarge: 50 – 200% in 1% increments
 Productivity: Scan Once Print Many,
 Electronic Pre-Collation
 Multiple Copies: Up to 99 copies of
 multiple page originals
 Auditor: Up to 50 accounts
 Option: Foreign Device Interface

Printing

Technology: Laser black and white
 Speed: 18 ppm A4
 Resolution: 600 dpi
 First Print Out: <15 seconds
 Duplex Option: Yes
 Page Description Language (PDL): PCL6; PCL5e;
 optional Adobe® PostScript® 3™
 Print Drivers: Windows 95/98/NT4.0/2000/Me/XP
 Interfaces: USB 2.0 standard; IEEE 1284,
 10/100 BaseTX Ethernet, Wireless LAN
 (IEEE 802.11) via third party wireless equipment

Faxing

Transmission Speed: 33.3 Kbps w/JBIG
 Communication Mode: Half Duplex
 Modem Speed: 33.6 Kbps
 Data Compression: JBIG, MMR/MR/MH
 Resolution: 600 dpi
 Halftones: 256 levels
 Secure Fax: Receive (F-code)
Dialing
 Speed Dial: Up to 200 supported
 One-Touch Dial: Up to 54 supported
 Group Dial: Up to 30 supported

Scan-to-email

Scan Resolution: Up to 600 x 600 dpi
 Speed: Up to 44 ipm (200 dpi)
 Depth: 1 bit
 Text and Halftone: 1 bit
 Bundled OCR Software: PaperPort® SE 9.0,
 OmniPage® SE v2.0

Device Memory (standard)

CopyCentre C118: 32 MB
 WorkCentre M118: 96 MB
 (Copy: 32 MB, Print: 64 MB)
 WorkCentre M118i: 160 MB
 (Copy/Fax: 96 MB, Print: 64 MB)
 Optional scan-to-email: 128 MB

Media Handling

Input Paper Capacity
 Standard: One Tray (250 sheets);
 Bypass Tray (100 sheets)
 Optional: One Tray (500 sheets),
 Two Tray Option (with mandatory One Tray Option):
 (500 + 500 + 500 sheets – total 1,850 sheets)
 Auto-Tray Switching Capable
Document Handler
 Document Handler: 50 Sheets
 Output Tray Capacity: 250 Sheets
 Media Types: Paper, envelopes, labels,
 transparencies (Bypass only)
Paper Size
 Minimum: 89 x 98.4 mm
 Maximum: 297 x 420 mm
Paper Weight
 Tray 1: 60 gsm – 90 gsm
 Tray 2, 3, 4: 60 gsm – 216 gsm
 Bypass Tray: 60 gsm – 216 gsm

Physical Dimensions (WxDxH)

640 x 520 x 487 mm – Base Unit
 with Platen Cover
 640 x 520 x 563 mm – Base Unit
 with DADF or ADF
 640 x 520 x 672 mm – Base Unit with
 One Tray Option with DADF
 640 x 520 x 1065 mm – Base Unit with
 One Plus Two Tray Option with DADF
 Weight: 49 kg – Base Unit

Device Management

CentreWare Internet Services (Networked
 Products), CentreWare Web, CentreWare DP,
 NDPS and HP Openview

Operating Environment

Temperature
 Maximum Range: 10° – 32°C
 Recommended Range: 16° – 30°C
Humidity
 Maximum Range: 15 – 85%
 Recommended Range: 30 – 70%
Electrical
 Power: 220V – 240V, 50/60 Hz
 Power Consumption:
 Average: 1320 VA – 1920 VA
 Energy Saver: ENERGY STAR® Compliant

Supplies

Approximate Yields
 Toner – Starter kit: 9,000 images*;
 Replacement kit: 11,000 images*
 Drum Cartridge: 60,000 images*
 *Capacities are approximate, based on 5%
 coverage on an A4-sized page and dependent
 on customer job mode run length.

Agency Approvals/Approvals

Safety: UL Safety
 North America: cULus approval
 Europe: CE, Nemko
 Russia: Gost
 Mexico: Nom

