

EFI Splash RPX-iii™ Colour Workflow Software for the Xerox 700 Digital Colour Press

Need an end-to-end Mac workflow solution? The Splash RPXiii is designed for graphic artists and production environments that require a high level of colour management and colour quality. Providing advanced job management and submission tools, it will increase productivity and deliver fast document turnaround.

High performance RIP

Print multi-set collated documents faster than ever before. With its significantly improved RIP performance, it also keeps pace with the Xerox 700's quick turnaround time for all jobs.

Total colour quality control

Now you can have total control over colour quality. It performs late-stage colour editing with ColorTweak and allows you to view the result of extended colour changes with ColorTuner's WYSIWYG ('What you see is what you get') proofing capabilities. The ColorCal® Expert Tools enable you to edit profiles and see how real-time changes affect the printed output.

Maximise your productivity

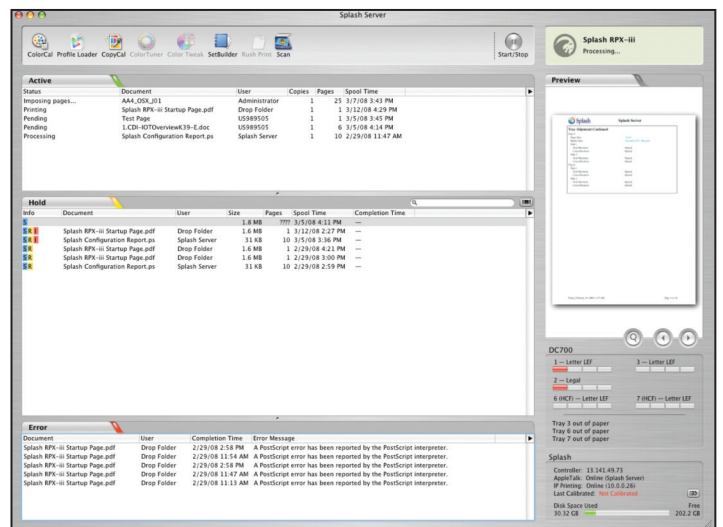
- Increase production capacity with faster processing speed when using Splash and Fiery® simultaneously
- Accommodate more users within the same print workflow
- Integrate Fiery and Splash printing workflows in the Fiery Command WorkStation® for greater throughput management
- Expert colour management tools in a familiar Mac user interface

PDF/X-3 compliant workflow

Print composite overprints of CMYK and spot colours and pass the Altona Test Suite1, and the Ghent Output Suite2. The Splash RPX-iii™ is fully compliant with PDF/X-3 workflow which is a great proofing system for press simulation.

Enhanced production environment workflow

This is the way to reduce turnaround time, eliminate bottlenecks and minimise downtime in your production workflow. The solution delivers sophisticated tools that seamlessly integrate into any graphic arts environment. These tools enable users to automate job submission, adapt to multiple printing workflows and reduce repetitive workflows for faster, error-free printing.



EFI Splash RPX-iii™ Colour Workflow Software Specifications

Digital Colour Press Support

- Xerox 700 Digital Colour Press is supported via either the Xerox EX Print Server Powered by Fiery or the Xerox Integrated Fiery Colour Server

Print Specifications

Print Server Data Path

- 600 x 600 x 8
- Print resolution
- 2400 x 2400 dpi for all supported page sizes
- Scan resolution
- Up to 600 x 600 dpi

Page Description Languages

- Adobe® PostScript® 3™ (v3017)
- PDF Native
- Compatible with PDF-X, CT/LW, PSD

Colour Management

Monitor matching, mixed TIFF/EPS, spot colour workflow, Colour Sync 2.6 compatible, mixed RGB/CMYK, press (SWOP, Euroscale, SNAP, TOYO, DCI simulation, import RGB, CMYK and output profiles).

Calibration

Colour sets, ColorCal, random patches, calibration for unique stocks, expert mode, AutoGrey. Supports ES-1000.

Maximum Printing Area

- Supports full bleed printing on oversized media
- Paper Size Maximum Printable Area SRA3, 317 x 480 mm

Ease Of Use

Graphic user interface

- Previews of RIP jobs, customisable status windows, drag and drop management, full job recovery, active queue job management.

Custom Driver

Provides application-independent colour management.

Document Management

Collation, Reverse order printing, Continual print, RIP-while-receive, DCS 2.0, EPS, PDF, PostScript 1.4, TIFF, and TIFF-IT, PDF-X, CT/LW, 1-bit TIFF, PSD direct print, remote job manipulation via Apple personal Web server are all supported. Hot folders for Mac, secure printing, set builder, imposition, Secure Access, print information.

Prepress Features

Preflight, progressives, custom CMYK profiles, user-definable screening, control strip, auto-trapping (application independent), dynamic edge smoothing, custom page size, separations, spot colour separations, screen DMax, selectable copier screening, spot colour editor, colour tuner.

Production Features

Mixed media, tab printing, schedule job, resume printing, job error, booklet imposition, image shift

Fonts

- 136 Adobe fonts plus two multi-master fonts included.

Network Connectivity

- Ethernet 10/100/1000 Base-T

Supported Clients

- Windows 2000®
- Windows XP®
- Windows XP® 64 Bit
- Windows 2003® Server
- Mac® OS 10.2 and higher

Print Drivers

- Macintosh OS X™
- Windows 2000®
- Windows 2003®
- Windows XP®
- Windows Vista®

Option

- EFI™ Colour Profiler Suite

Minimum Compatible Hosts For Splash Rpx-iii™ Colour Workflow Software

- Two 2.6GHz Dual-Core
- Intel® Xeon®
- Built-in Ethernet connection (direct connect requires 2 Ethernet ports on the Mac)
- Macintosh OS 10.4.3 or later
- 1 60 GB minimum hard drive
- 1024 x 768 dpi resolution monitor
- Combo (DVD-R/CD-RW) or SuperDrive (DVDRW/CD-RW) drive
- 2 GB minimum host memory

For more information on the EFI Splash RPX-iii™ Colour Workflow Software for the Xerox 700 Digital Colour Press, please contact your local Xerox representative or visit us online at www.xerox.com